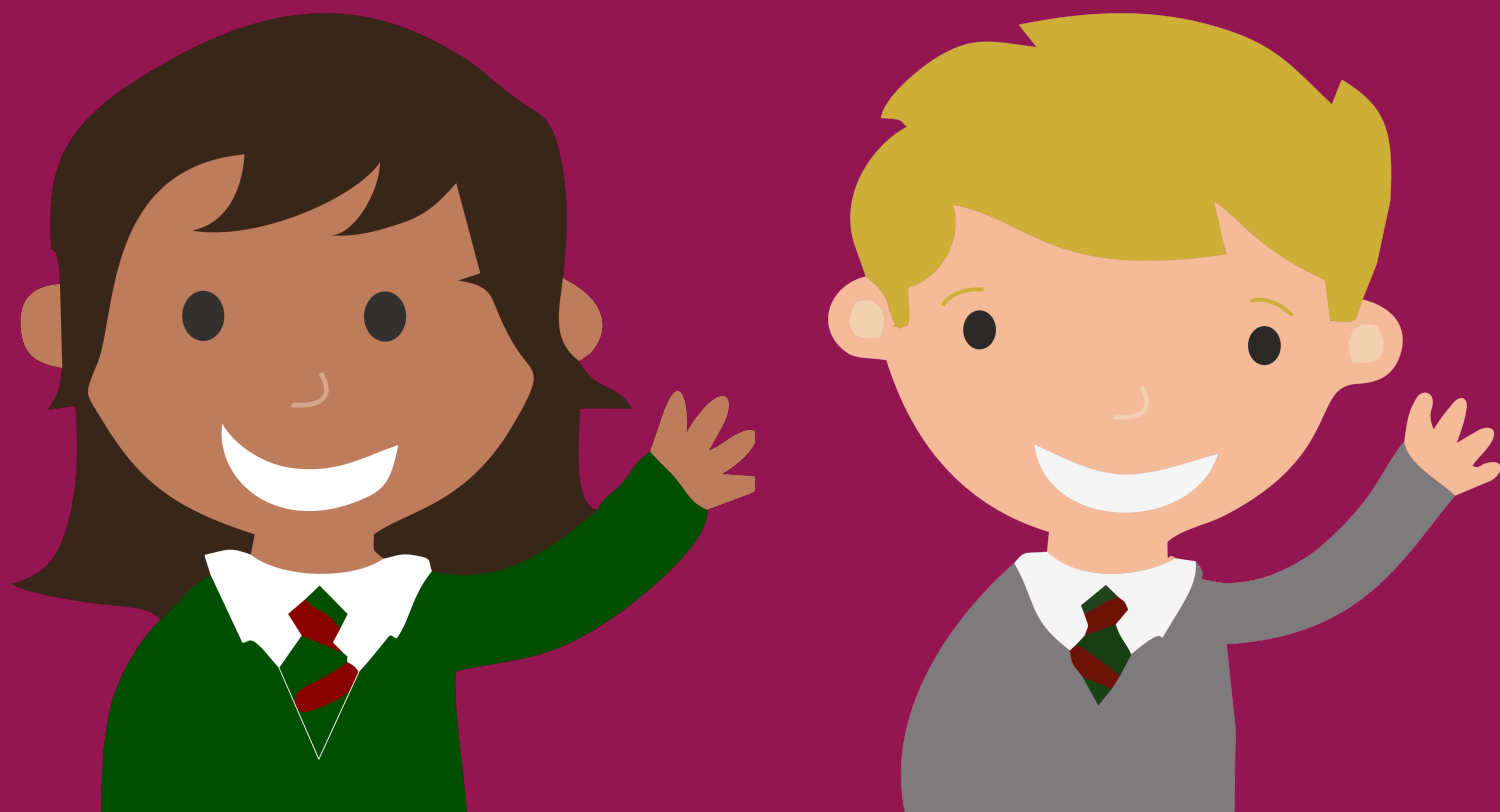


NETTLEFIELD PRIMARY SCHOOL AND NURSERY UNIT

A place to grow, dream big and shine brightly!

SCHOOL PROSPECTUS









PRINCIPAL'S WELCOME

Nettlefield Primary School is '**a place to grow, dream big and shine brightly**'.

Children whose educational journey begins here personally thrive through the demonstration of a positive attitude to behaviour, work and play. As a school family we aim to provide the highest standards of achievement and help your child to reach their personal best in a safe, encouraging and growth orientated environment.



Welcome to Nettlefield Primary School, we thank you for taking an interest in our vibrant and family focussed school. We have designed this prospectus to reflect everyone within our school family to share with you the ethos and the heart for our community and for the children in our care.

Nettlefield Primary School is 'a place to grow, dream big and shine brightly'. Children whose educational journey begins here personally thrive through the demonstration of a positive attitude to behaviour, work and play. As a school family we aim to provide the highest standards of achievement and help your child to reach their personal best in a safe, encouraging and growth orientated environment.

School life is very busy and has many aspects, we believe that Nettlefield Primary School caters for everything life throws at us but still maintains the distinctive character, atmosphere and expectations that encourages and enables your child to succeed in all that they do.

We aim to express Christian values in the life of school but remain open to all children. We are extremely proud of our children, our staff and our school. Our school shows a strong commitment to the care and welfare of all our children and will always seek to respond sensitively and appropriately to concerns children or parents may have.

The school has a strong tradition of high expectation of the personal effort of our pupils and this is reflected in the expectations held by staff in terms of their attitude, approach and application to learning, school behaviour, respect for others, appearance and attendance.

I am extremely proud to lead a highly dedicated and professional team who are committed to providing the best opportunities for children who attend Nettlefield Primary School. The Educational Team work hard to deliver a rich and challenging curriculum; to prepare children for future education; to help them gain the skills and enthusiasm needed to chase after learning for the rest of their lives.

We look forward to welcoming you to our school and to a happy and successful partnership with all our new children and families.



VISION AND VALUES

Our school mission statement is 'A place to grow, dream big and shine brightly.'

That's exactly what we would hope every child and growing young person receives the opportunity to do at Nettlefield Primary School.

Education is a prized possession at Nettlefield and we believe it is the right of every child to access a broad and balanced curriculum that unlocks a bright future. **Education is the key!**

Because of this foundation, we believe that all decisions, plans and developments are designed to give our children a hope and future worth having.

We also have a range of agreed values and expectations that help to make





STARTING SCHOOL FOR THE FIRST TIME

Starting school is a very important time for you, your child and the school. We all need to work together to make the transition smooth and rewarding. Details of the respective functions of the Board of Governors and the Principal in relation to admission to the school.



Admissions to Primary One

Details of the respective functions of the Board of Governors and the Principal in relation to admission to the school. In the event of the school being oversubscribed the Board of Governors will apply the following criteria.

The criteria are applied successively in the order listed:

1. Children who have a child of the family enrolled in Nettlefield Primary School in the year of application.
2. Children who attended Nettlefield Nursery Unit.
3. Children who have a child of the family who earlier transferred to an off-site educational unit or post-primary school from Nettlefield Primary School.
4. Children who are the eldest or only child in the family.
5. Any other children up to the maximum admissions number.

If the admissions number is exceeded within any single criterion, priority will be given to children whose parent(s)/guardian(s)' homes are closest to Nettlefield Primary School as measured using a website that calculates the distance (as the crow flies) between the nearest school gate and the address of the applicant, such as www.mapdevelopers.com. In the event of two or more children's permanent residence being measured equidistant for the final place, preference will be given to the eldest child.

NOTES:

- a) Child-minders' addresses will not be considered.
- b) The term "child of the family" includes children residing at the same address and under the guardianship of the same adult.

EARLY YEARS



Primary One at Nettlefield Primary School.

As children begin their new adventure of discovery and learning, it is the aim of Foundation Stage Teachers and assistance staff to make this experience as enjoyable and fulfilling as possible in order for all pupils to reach their maximum potential.

The Primary One Team

The Primary One team is a dedicated cohort of teachers and Learning Support Assistants who are committed to knowing and educating each child. They are experienced educational practitioners who within the early years framework, use all their expertise to provide a broad, balanced and exciting curriculum to all in their care.

Pastoral Care

The needs of all pupils are of highest importance within Nettlefield Primary School and as such, extend beyond academic learning. Due to the strong emphasis the school places upon the social and emotional development of children in our care, if parents should find that their child is struggling in any way please do not hesitate to get in contact.

We would encourage parents to make initial appointments in order to speak to a class teacher or Head of Foundation Stage who will endeavour to resolve any query they may have. Failing this, an appointment can be made with Mrs Fullerton, our Vice-Principal or Mr McLean, our Principal. There is always someone willing to help.

The Curriculum

The Primary One curriculum builds directly onto the skills taught and experiences gained through pre-school education. The curriculum is exciting and accessible to all through varied activities and topical play based learning. Reading and writing are developed throughout the year by initially using a multi-sensory approach to phonic skills and letter formation progressing to extended reading and writing activities in Term 2.

Numeracy Lessons are practical and engaging, providing real life context to the numerical learning that is taking place.





NETTLEFIELD NURSERY

At Nettlefield Nursery learning is play – based. This means that children choose the activity that they would like to do and learning is supported and extended by adults in the classroom, as part of their play.

Learning also takes place in small groups, or whole class sessions. Nettlefield Nursery have a strong focus on the whole child so we ensure that your child is catered for academically and socially and emotionally.

The Nursery curriculum is underpinned by six areas of learning, as set out in the Pre-School Curriculum guidance document issued by the Department of Education. There is one session each day, with two classes of 26 children. Each class is staffed by a teacher and a Nursery Assistant but in some circumstances a Special Needs Classroom Assistant will also be employed. Throughout the year, there may also be students on placement in school.

- Personal, Social and Emotional Development
- Language Development
- Early Mathematical Experiences
- The World Around Us
- Physical Development and Movement
- The Arts
- Outdoor Play

Admissions to Nursery

Statutory Criteria

1. Children from socially disadvantaged circumstances in their final pre-school year who were born:
 - on or between 2 July 2020 and 1 July 2021 (inclusive) and whose parents have not exercised their right to defer their child's entry to primary school; or,
 - on or between 1 April 2020 and 1 July 2020 (inclusive) or were due to be born on or between those dates but were born earlier; and,
 - have not attended or are not currently attending a funded pre-school setting under the Pre-School Education Programme as a target aged child; and,
 - that child's parent has completed a request to defer their child starting P1 until September 2025.

Note: Children from 'socially disadvantaged circumstances' means a child whose parent has an entitlement to (i) Income Support, or (ii) Income-based Jobseeker's Allowance, or (iii) Income related Employment and Support Allowance, or (iv) Universal Credit. When parents apply for places for their child on this basis they must provide Benefit Verification to confirm that they have an entitlement. The application procedure for Pre-School will outline how Benefit Verification can be submitted.

2. Children not from socially disadvantaged circumstances (as defined above) who are in their final pre-school year (as defined by Criterion 1).

Sub-criteria

If the admissions number is exceeded within any single criterion then the Governors have determined that the following further criteria shall apply in the order stated:

- Pupils who will have a child of the family enrolled in Nettlefield Primary School in the year of starting nursery.
- Pupils who have a child of the family who earlier transferred to an off-site educational unit OR post-primary school from Nettlefield Primary School (indicate name and date of attendance).
- Those applicants who have stated Nettlefield Nursery as their first preference.

Note: Children whose parent(s)/guardian(s)' homes are closest to Nettlefield Primary School as measured using a website that calculates the distance (as the crow flies) between the nearest school gate and the address of the applicant, <https://www.daftlogic.com/projects-google-maps-distance-calculator.htm> In the event of two or more children's permanent residence being measured

Waiting List Policy

Should a vacancy arise after Tuesday 11 June 2024, all applications for admission to Nettlefield Nursery Unit, that were initially refused, new applications, late applications and applications where new information has been provided will be treated equally and the published criteria applied. This waiting list will be in place until 30 June 2025.





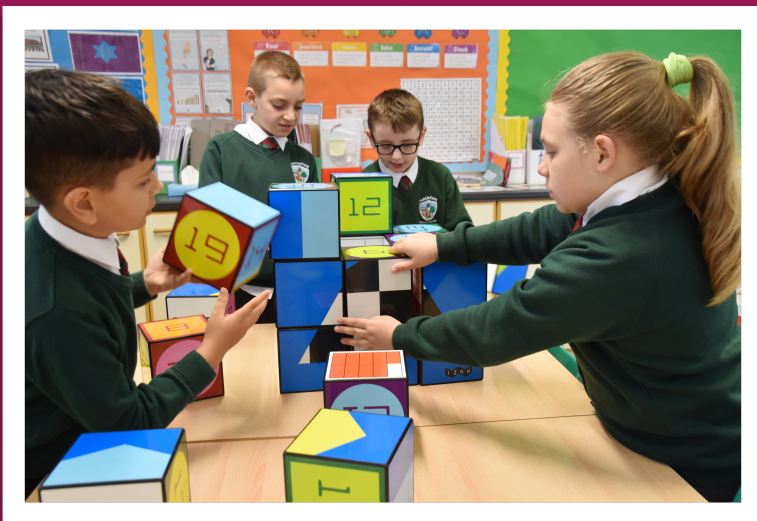


OUR SCHOOL CURRICULUM

The school curriculum comprises all learning and other experiences we plan for our pupils. This provides lots of opportunities for all pupils to learn and to achieve.

Pupils are helped to:

- Develop the essential Literacy and Numeracy skills they need to learn
- Develop the attitudes, understanding and skills to become successful, independent learners
- Foster their creativity
- Develop lively, enquiring minds
- Develop personal values, qualities and attitudes and be respectful of other people, their views and opinions
- Develop appreciation and concern for the environment
- Work co-operatively with others
- Work towards achieving their potential



Literacy

At Nettlefield Primary School our aim is not only to teach children the skills to read with confidence, fluency and understanding but, also to foster a genuine desire to read for pleasure and purpose. All children have access to online books at home to practise and reinforce the skills taught in school. There are lots of opportunities to develop talking and listening skills both in class and outside the classroom through our annual Carol Service and Summer Concert.

Mathematics & Numeracy

Mathematics is important in everyday life. Through teaching and learning in this area we aim to develop children's confidence and enthusiasm in using and applying mathematical skills and knowledge to the world around them.

Our teaching programme is based on the Northern Ireland Curriculum and emphasises a range of approaches to develop the five strands of:

- Numbers and number systems
- Calculations
- Solving Problems and processes
- Measure
- Data handling
- Shape and Space

We recognise the importance of cross-curricular links with World Around Us, ICT and other subjects and opportunities to apply numeracy skills across the curriculum are promoted by teachers.

Information & Communication Technology

We believe that all children should be given opportunities to engage in a broad, ICT rich curriculum that provides motivation, enthusiasm and enjoyment. At Nettlefield we have a range of laptops, iPads and there are interactive whiteboards in all classrooms. We also have after school Code



World Around Us

The teaching and learning of World Around Us is through planned themes which are incorporated into an overall curriculum framework.

Through the study of topics, children are given opportunities to develop an awareness of their immediate surroundings, other places and how people have used their environment.

Religious Education & Collective Worship

We are a controlled school and have a strong commitment to expressing Christian principles and values in the life of school but remain open to all children. We have RE and Circle Time in our classrooms and all children attend assemblies each week as a collective act of worship and reflection.



Art & Design

Art for most pupils is a natural form of expression and a source of great pleasure. We encourage children to develop their creative and imaginative talents through learning skills and techniques using a variety of materials and tools. From time to time, pupils may have the opportunity to work with professional artists and crafts people.

Music

Music is a practical subject and children are encouraged to sing, compose and work creatively with sound. Through active listening, pupils' awareness, understanding and appreciation of a wide variety of music are developed.

In addition, many children also become members of the school choir and various musical groups. We have tuition available for woodwind and brass instruments. Involvement in Assemblies, Concerts and Services are a highlight.



Physical Education (PE)

We are very lucky here at Nettlefield as we are fully equipped with our very own multi surface pitch. This is an amazing resource that all classes use. At Nettlefield we pair PE with the promotion of positive attitudes towards physical activity and well-being. Children are helped to acquire the skills needed to participate with confidence and enjoyment in a range of individual team activities at school and in the wider community, and to appreciate the place of regular exercise as a way of keeping fit.

Children have the opportunity to take part in sporting activities within the school,





Safeguarding

Nettlefield Primary School is committed to safeguarding and promoting the welfare of children and expects all staff and volunteers to share in this commitment. Staff work hard to maintain an environment where children feel safe and secure.

The curriculum is designed to ensure opportunities for children to develop the skills they need to recognise and stay safe from harm. Children know that they can approach any of the adults in school if they are worried and that they will receive a consistent supportive response.

Family, Social & Worldwide Links

Even before our Primary One children arrive at school, important links are made with local pre-school provision and in particular our Nursery School. Visits are made by our Primary One teachers to the Nursery and new children also have the opportunity to visit our school and meet their new teachers. We have a good relationship with local schools involving curriculum and social visits and projects. We frequently take part in inter-school sporting competitions in football and cross-country and hold an annual George Best Football tournament. In addition we are regular participants in ICT competitions.

An important part of school life has also been the links forged with local post primary schools. Visits both to and from these schools make a significant contribution to the ease of transfer of our children from primary to secondary education.

Inclusion & Equality

Personal Development and Mutual Understanding (PDMU)

This is an important area of the curriculum that helps children grow and develop as individuals and as members of families and communities. Through PDMU pupils will have the knowledge, understanding, skills and attitudes they need to lead confident, healthy, independent lives and to become informed, active and responsible citizens.

We also use the PATHS® Programme for Schools which empowers all children to develop the fundamental social and emotional learning skills which will enable them to make positive choices throughout life.

Whole school systems emphasising praise, recognition and reward exist to promote and celebrate positive behaviour and sustained effort and hard work.

Perhaps, most importantly, we want pupils to leave our School with feelings of self-confidence, self-worth and high self-esteem.

We have had a School Council since September 2013 recognising the importance of pupils having a voice in decisions that affect them. The Council is made up of elected members from each class, and a representative from the staff. It represents the pupils and puts forward new ideas, suggestions and ways of solving issues.

Behaviour

At Nettlefield Primary School we believe that children learn best in a well-organised, calm and secure environment where purposeful and self-disciplined behaviour is expected. We want every child in our school to feel confident, happy and safe. As a caring school we have the highest of expectations in terms of learning, behaviour and attitudes, and encourage our children to develop similar beliefs in their own potential, together with pride in their achievement.

Whole-school systems emphasising praise, recognition and reward exist to promote and celebrate sustained effort and hard work, and contributions towards the school community.

All forms of bullying and harassment are considered to be unacceptable and are not tolerated within the school environment. All incidents will be taken very seriously and followed up in accordance with our Anti-bullying Policy.

OTHER INFORMATION

Communication – Home/School

We communicate with parents and carers in various ways, for example through our weekly newsletter, questionnaires, workshops and informal social events.

Parents are invited to Parents' Mornings / Afternoons as appropriate. Every year parents and others are invited to attend our Annual Nativity and Sports Day as well as children's performances.

Staff will always be happy to meet with parents and carers to share information. The School's website has a wealth of information including our weekly newsletter, class pages and copies of key policies.

A school messaging service also keeps parents reminded of key dates and any emergency information.

The addition of Seesaw, Eduspot School Money and Bug Club have been other commitments the school has made to bridge the divide between class time and home time.

We welcome parents to work alongside the staff in school and such involvement is invaluable for all concerned. There is an open invitation for parents

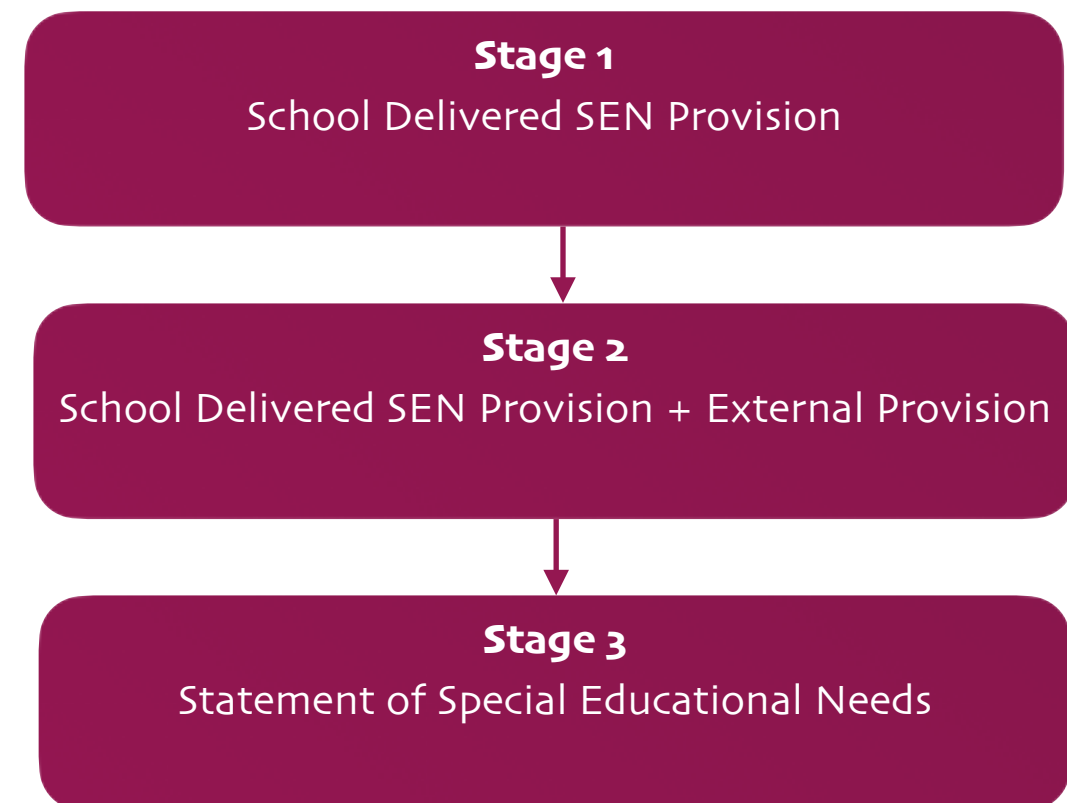
Catering For The Needs of All Pupils

At Nettlefield Primary School we believe that every child is unique and special, and we aim to provide a broad and balanced curriculum for all. We are committed to developing cultures, policies and practices that are inclusive.

We have systems to identify when children have barriers affecting their learning and tailor specific interventions to enable pupils to overcome their barriers. This practice of personalising learning applies to all pupils across the learning spectrum.

Our policy is to identify children with special educational needs as early as possible and, with the support of parents, begin remediation. Children will be allowed to proceed at a level and speed suited to their individual needs.

The school is required by the Statutory Code of Practice for Special Needs to adopt a five staged referral procedure as follows:



Our programme of continual assessment ensures that parents are kept fully informed of their child's progress. Individual pupils are also aware of their education plans and targets each term.





Reading gives you
imagination
WINGS

LOOK

WHO GOT CAUGHT
READING!



Nettlefield



CONTACT

Address:

Radnor Street,
Belfast,
BT6 8BG

028 9045 8237

Website:

www.nettlefield.co.uk

Email:

help@nettlefield.co.uk

Education Authority

40 Academy Street,
Belfast,
BT1 2NQ

028 9056 4000

Principal

Mr S. A. McLean

Chair of Governors

Mrs M. McCartney

Other Information**Healthy Eating**

We are a Healthy School and are committed to promoting and monitoring healthy food at break and lunch times.

We also have launched a Breakfast Club initiative for all pupils within the school. This runs from 8:00am every day. Children start classes at 8:55am, our pupils receive a healthy breakfast and take part in games and activities before school begins. Parents can book places a week in advance for the whole week or for specific days only. A small fee applies.

School Meals

Currently children have the opportunity to choose between a hot school meal from our on site cafeteria or to bring a packed lunch. If you think your child is eligible for free school meals, please collect a form from the school office.

Snack Time

We recommend all children have a mid-morning snack. We welcome fruit and vegetables, and would ask you not to send your child with chocolate, crisps or sweets of any kind.

Peanut Allergies

As we have a few children throughout the school who suffer from this allergy, ranging from mild to extremely serious. Nettlefield Primary School is a nut-aware school. Parents should not to send children to school with food containing peanuts. This will ensure the safety of all our pupils.

Other charges and Remissions

Education in Nettlefield Primary School is provided free of charge for all lessons and activities.

Exceptions are detailed below:

- All board, lodging and travel costs on residential trips
- Cost associated with optional extras e.g. extra-curricular activities or some trips
- Tuition in a musical instrument/swimming instruction.

The school will, as it has done in the past, appeal to parents for voluntary donations but it is stressed that no child will be disadvantaged in any way if parents are unable





